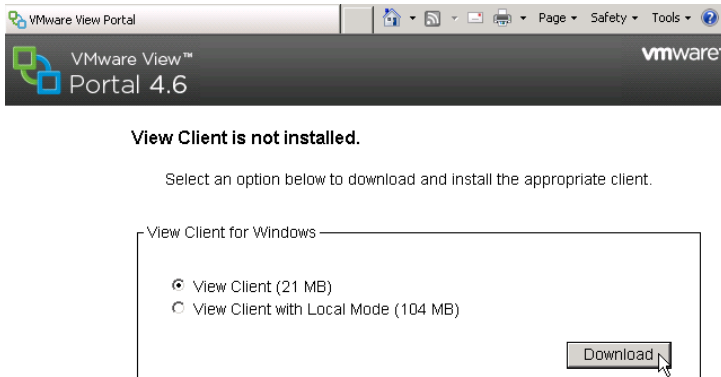


# VMware View Client Installation Guide (Windows)

**(Please note: The steps in this document must be followed exactly as shown in order to ensure a proper installation.)**

**Requirements:** You must have an existing internet connection in order to access VMware View (it is highly recommended that your Internet connection is Broadband or DSL – VMware View is not designed to work with dial-up access).

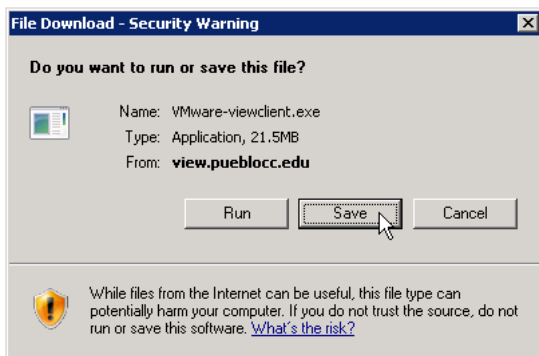
1. Open your web browser and browse to <http://view.pueblocc.edu>
2. In the View Client for Windows box, select “View Client (21 MB)” and click the “Download” button



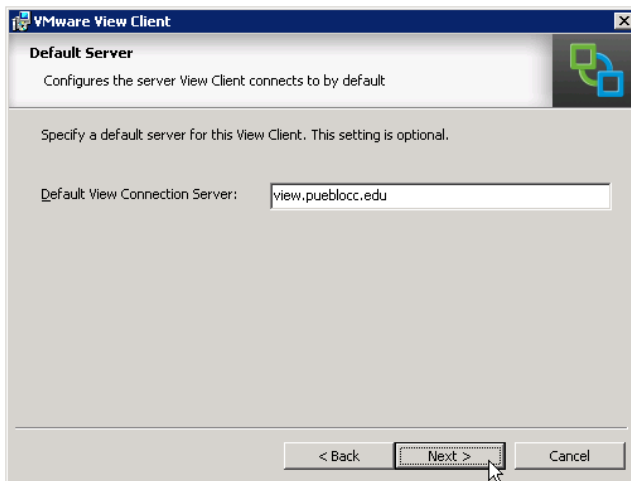
3. If an information bar appears, click on it and select “Download File”



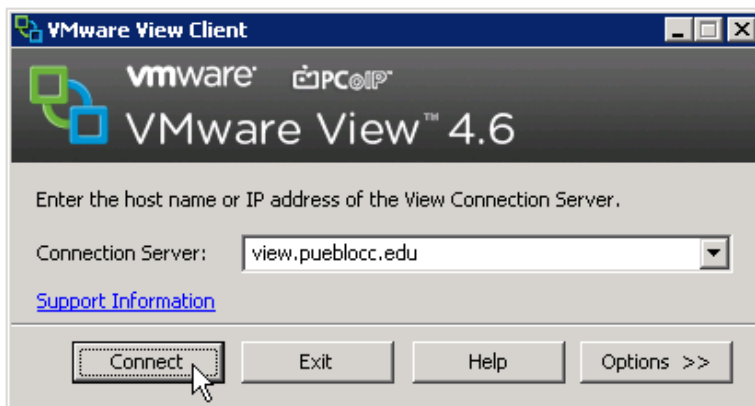
4. Click “Save” to download the file to your computer (make note of where you are saving the file to)



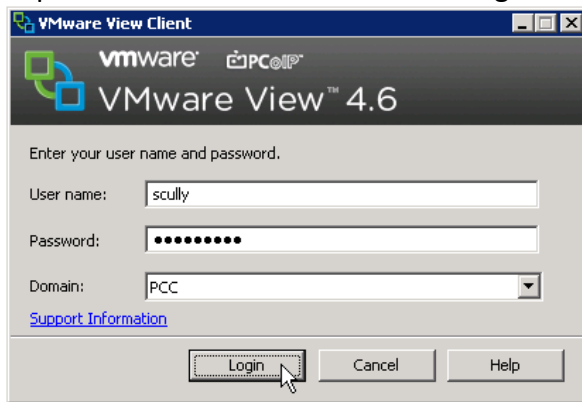
5. Double-Click the downloaded file to start the install.
6. Click “Next” on the Welcome screen
7. Click “Next” on the Patent Agreement screen
8. Click “I accept...” and “Next” on the License Agreement screen
9. On the Custom Setup screen, accept the default options and click “Next”
10. On the Default Server screen, type **view.pueblocc.edu** and click “Next”



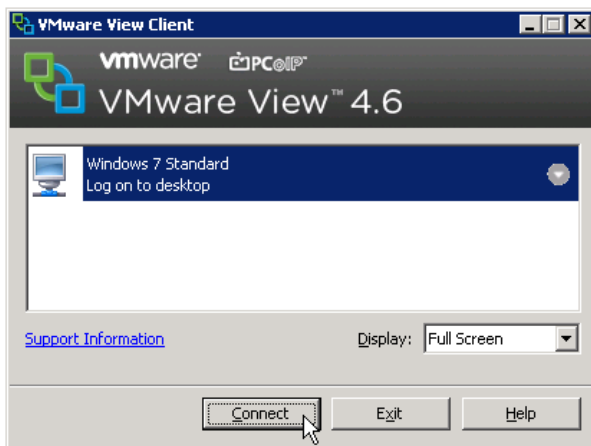
11. Uncheck all options on the Enhanced Single Sign On screen and click “Next”
12. Click “Next” on the Configure Shortcuts screen.
13. Click “Install” on the Ready to Install the Program screen.
14. If prompted, restart the computer to complete the installation.
15. To start a connection to VMware View, Double-Click on the **VMware View Client** icon on your desktop
16. In the Connection window, make sure the Connection Server name is **view.pueblocc.edu** and click the “Connect” button



17. At the logon screen, enter your Windows username and password, make sure the Domain dropdown shows PCC and click the “Login” button



18. At the desktop selection screen, highlight the desired desktop to connect to, select the Display size from the dropdown (Full Screen Recommended) and click the “Connect” button



You are now connected to a VMware View desktop. Please refer to the VMware View User Guide for instructions on how to use VMware View. If you have any trouble, please call the PCC Computer Help line at 549-3350 or send an e-mail to [help@pueblocc.edu](mailto:help@pueblocc.edu)